

SABC - Swiss American Business Council
&
Cleared4Work

May 20, 2020

SABC Member Online Townhall presented by Cleared4Work

Agenda:

- Welcome by Thomas W. Soseman, President of the SABC
- Welcome by C4W, introduction to the team and a brief overview
- Live Demo of the platform, flow and business logic
- Active Q&A session with our founder Dr. Soumitra Eachempati & Team

Please use the chat to submit all your questions throughout the presentation.

CLEARED4WORK 
Safely Reopening Our World^(TM)

Presenting Team:

Dr. Soumi Eachempati **Co-Founder**

A former Professor of Surgery and Public Health at Weill Cornell Medical College where he worked from 1998-2017. He specialized in Trauma, Critical Care, and Emergency Surgery. He was formerly the Director of Trauma and Director of the Surgical ICU at New York-Presbyterian Weill Cornell Center. He also received an appointment in the Division of Public Health.

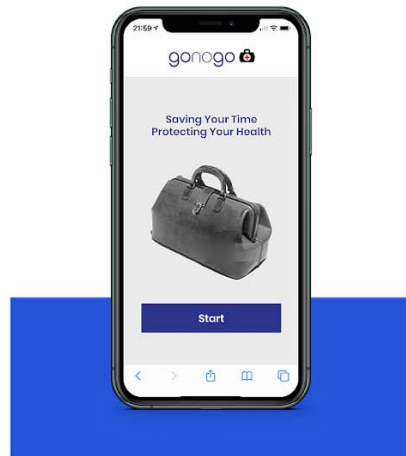
Thomas Aabo **VP Sales & Partnerships**

Thomas Aabo leads the Cleared4Work sales and partnership efforts, focused on helping customers achieve CDC compliance and employee safety with Cleared4Work technology, procedures and best practices.

Markus Aerne **Sales, Government & NFP**

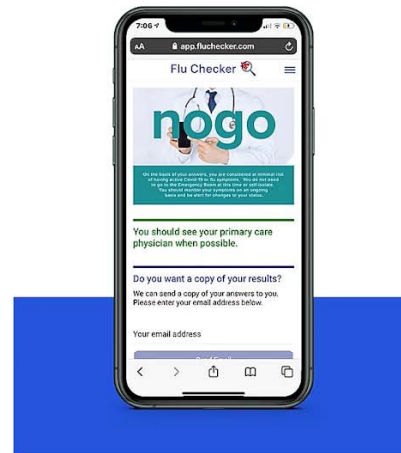
Markus Aerne leads the not-for-profit and government sector outreach at Cleared4Work. Mr. Aerne brings 25 years of business & project management experience from the supply chain & logistics as well as manufacturing sectors.

Dr. Soumi



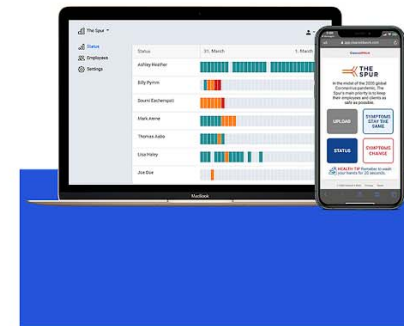
GONOGO Health

An app launched in 2017 which helps take away the uncertainty around whether or not to visit the Emergency Room.



FluChecker

Flu Checker uses the core GONOGO Health platform and symptom algorithms but is focused on the Covid-19 crisis.



Cleared4Work

Automating the process of ensuring workplaces and venues are safe and Covid-19-free

Considerations:

It's about protecting at-risk people at work, our homes and communities

US has much higher risk of underlying conditions

"Opening Up America", OSHA and State guidelines, employers are NOW required to:

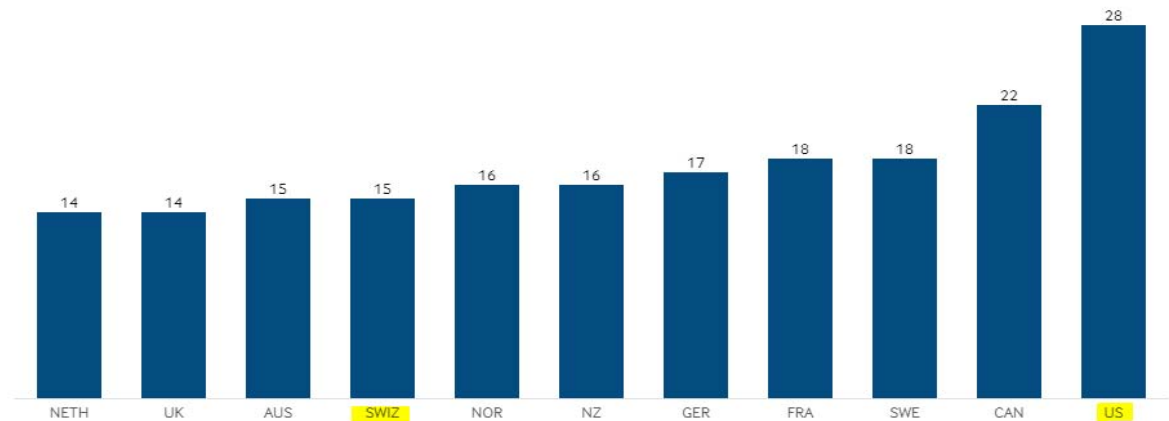
- Monitor their workforce for indicative symptoms.
- Employers must NOT allow symptomatic people to physically return to work.

POPULATION HEALTH

U.S. Adults Have the Highest Chronic Disease Burden

Percent (%)

11-country average: 17.5%



[Download data](#)

Notes: Chronic disease burden defined as adults age 18 years or older who have ever been told by a doctor that they have two or more of the following chronic conditions: joint pain or arthritis; asthma or chronic lung disease; diabetes; heart disease, including heart attack; or hypertension/high blood pressure. Average reflects 11 countries shown in the exhibit that take part in the Commonwealth Fund's International Health Policy Survey.

Data: Commonwealth Fund International Health Policy Survey, 2016.

Cleared4Work combines all three critical components needed for a comprehensive COVID-19 management platform:

**CDC COMPLIANT
SYMPTOM
MONITORING**



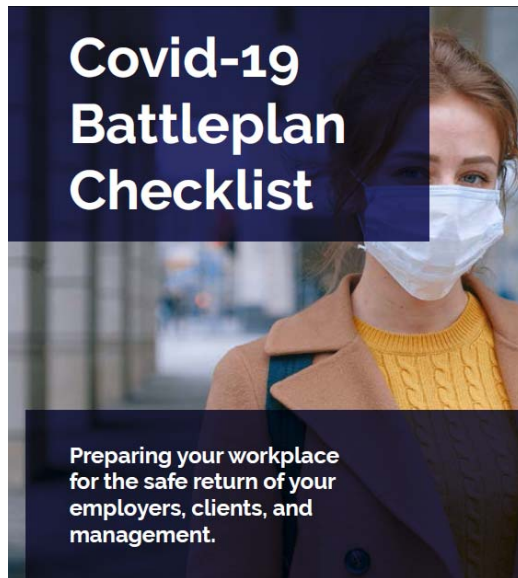
**STRICT
ACCESS
CONTROL**



**PRO-ACTIVE
CONTACT
TRACING**



Designed for functionality & flexibility out of the box
Fully HIPAA and Security compliant



Cleared4Work:

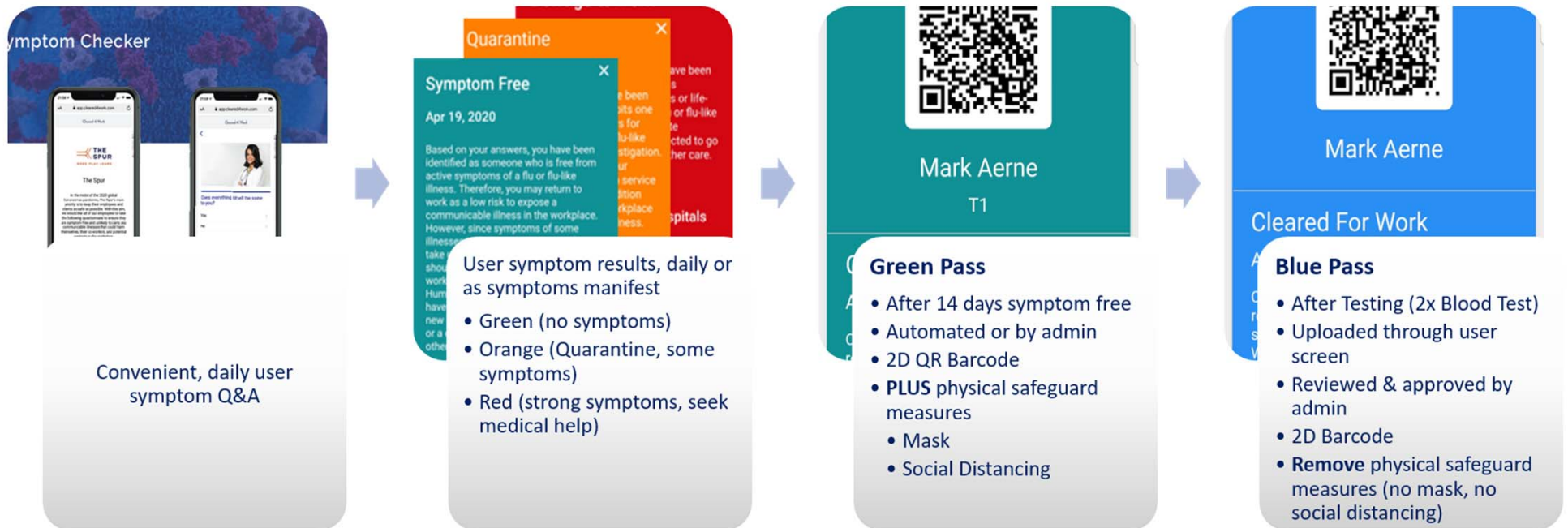
- Detailed Self-Assessment & Monitoring
- Automation – Admin & RTW Logistics
- Access Control
- Fit-for-Action report across all business units & locations
- Contact Tracing
- Communication
- Risk Management & Auditing



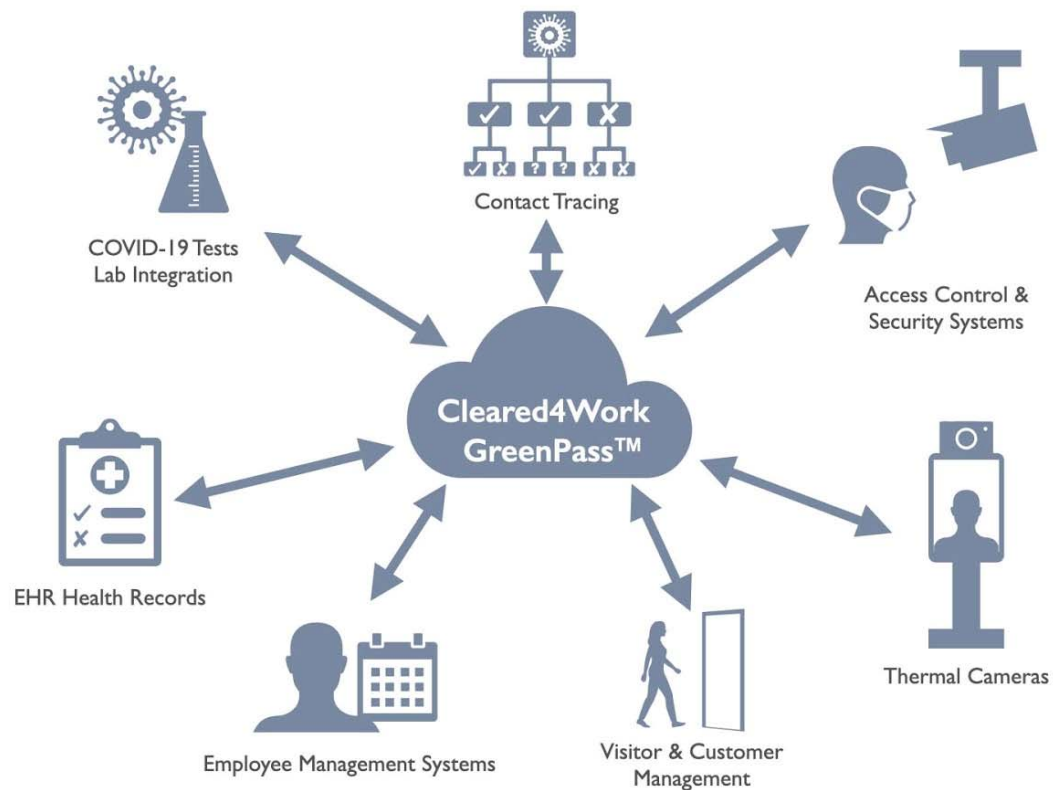
**Organization Physical
Safeguards & Policies:**

- Face Mask
- Social Distancing
- Hand Washing
- Shifts
- Seating/Station Charts
- Cleaning & Disinfecting
- Access & Security

Blue Pass Concept

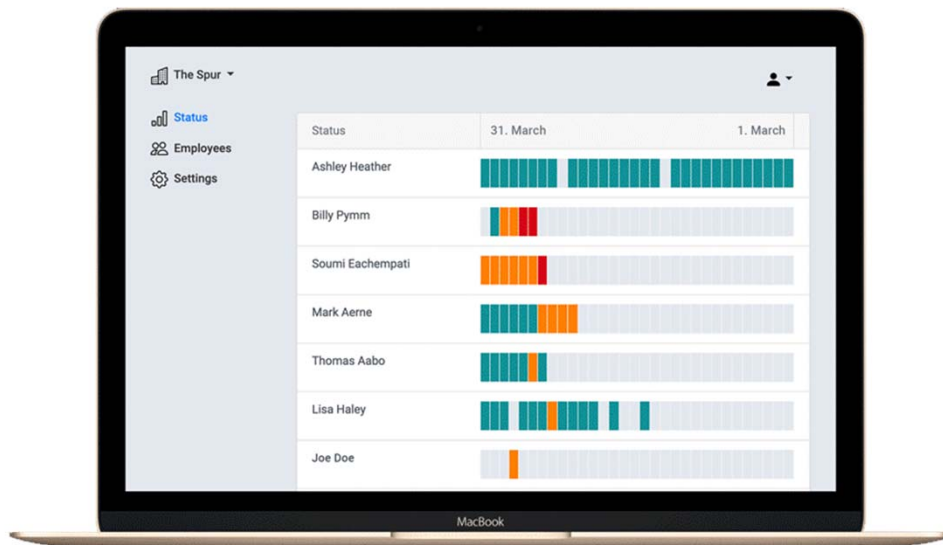


Platform Integrations



Thomas

Live Demo



Automating:

- Symptom Monitoring
- Access Passes/Control
- Temperature & Covid Test Integration
- Resource Management
- Communication
- Contact Reporting

Thank you & stay safe!

Please schedule an online demo with us

markus@cleared4work.com

Direct +1- 516-312-0286